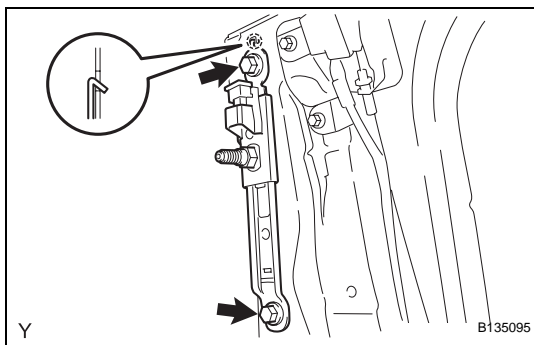
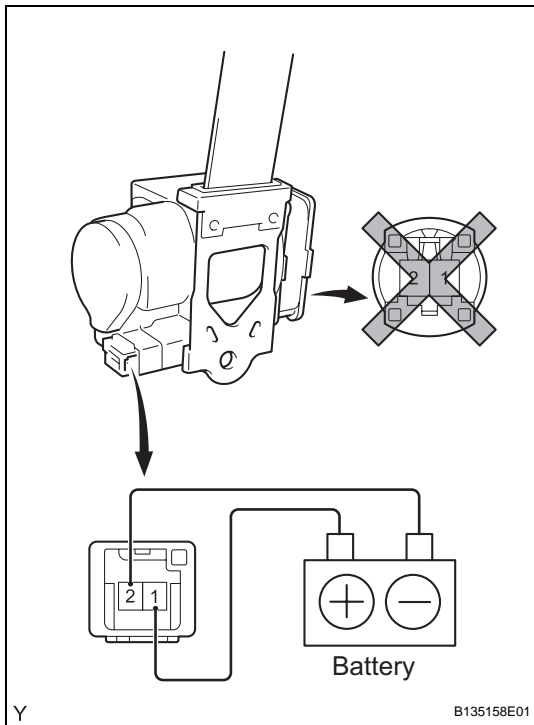


- (3) Using a screwdriver, release the locking button of the pretensioner connector.
- (4) Using a screwdriver, disconnect the pretensioner connector.



## 9. REMOVE FRONT SHOULDER BELT ANCHOR ADJUSTER ASSEMBLY

- (a) Remove the 2 bolts, the hook and the shoulder belt anchor adjuster.



## INSPECTION

### 1. INSPECT FRONT SEAT OUTER BELT ASSEMBLY (for Driver Side)

- (a) Check the operation.

#### NOTICE:

**Do not apply battery voltage to the pretensioner connector.**

- (1) Connect the positive battery lead to terminal 1 of the tension reducer connector and the negative battery lead to terminal 2.
- (2) Check that an operating sound is heard when the magnetized solenoid attracts the plunger.
- (3) Pull out the seat belt and allow it to retract. Listen to the operating sound.
- (4) Pull out the seat belt again, disconnect the negative battery lead and allow the seat belt to retract. Listen to the operating sound again and check that the operating sound volume has increased.

If the result is not as specified, replace the front seat outer belt.

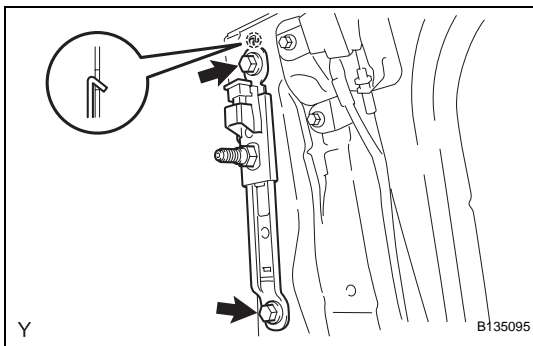
## INSTALLATION

### CAUTION:

Some of these service operations affect the SRS airbag system. Read the precautionary notices concerning the SRS airbag system before servicing (See page RS-1).

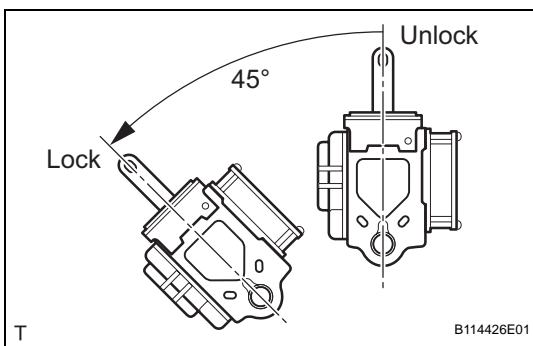
### HINT:

The procedure described below is for the RH side. Use the same procedure for both the RH and LH sides, unless otherwise specified.



### 1. INSTALL FRONT SHOULDER BELT ANCHOR ADJUSTER ASSEMBLY

- (a) Insert the hook into the body hole and provisionally install the shoulder belt anchor adjuster with the 2 bolts.
- (b) Tighten the upper bolt and then the lower bolt.  
**Torque: 42 N\*m (430 kgf\*cm, 31 ft.\*lbf)**



### 2. INSTALL FRONT SEAT OUTER BELT ASSEMBLY

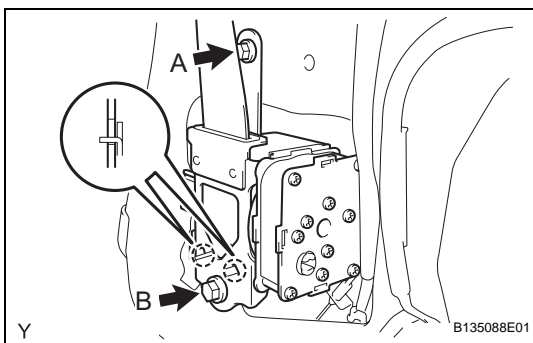
- (a) Check the angle of inclination required to lock the retractor.
  - (1) Gently incline the retractor from its initial position. Check that the belt does not lock when the retractor is inclined 15° or less in any direction. Also, check that the belt locks when the inclination of the retractor is 45° or more.

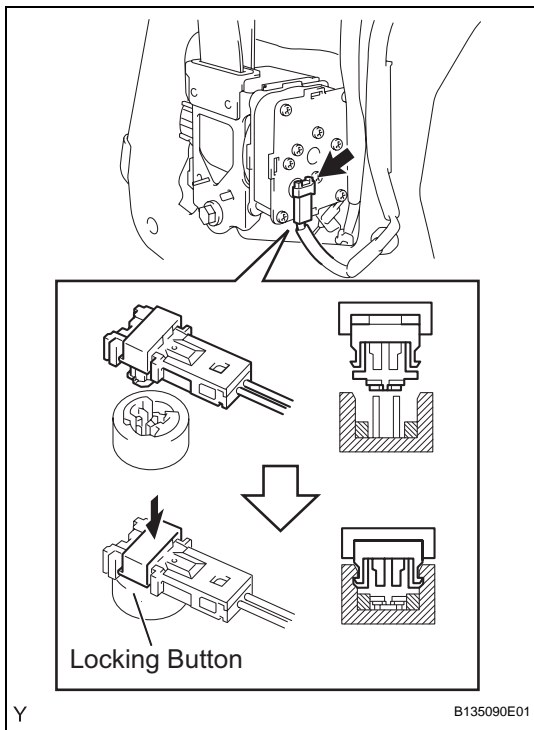
### NOTICE:

**Do not disassemble the retractor.**

If the operation is not as specified, replace the front seat outer belt.

- (b) for RH Side:
  - (1) Hook the lower stay of the retractor onto the 2 body hooks and provisionally install the retractor with the 2 bolts.
  - (2) Tighten bolt A and then bolt B.  
**Torque: 8.5 N\*m (85 kgf\*cm, 75 in.\*lbf) for bolt A**  
**42 N\*m (430 kgf\*cm, 31 ft.\*lbf) for bolt B**

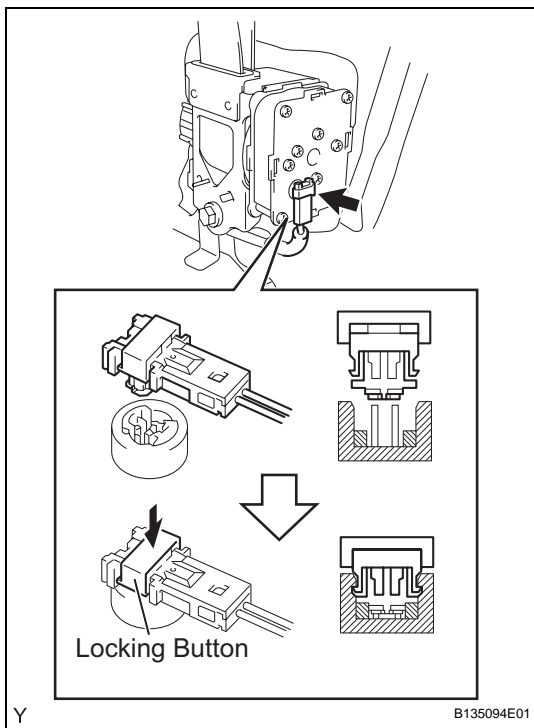




- (3) Connect the pretensioner connector.
- (4) Lock the locking button of the pretensioner connector.

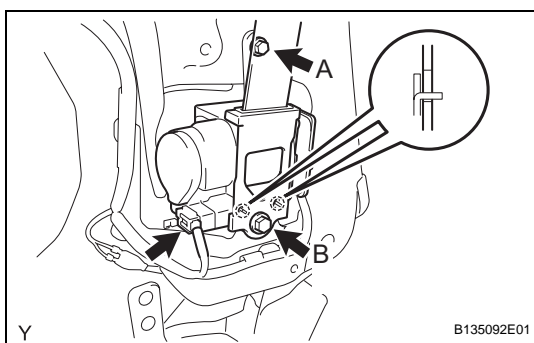
**NOTICE:**  
Securely lock the locking button.

SB

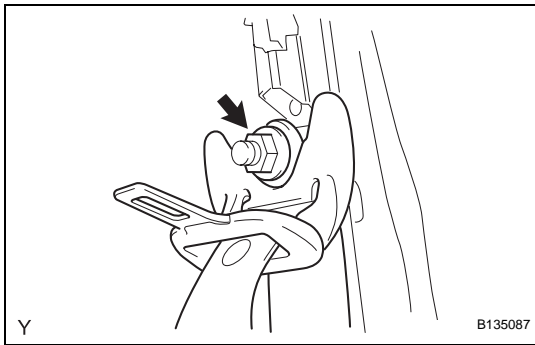


- (c) for LH Side:
  - (1) Connect the pretensioner connector.
  - (2) Lock the locking button of the pretensioner connector.

**NOTICE:**  
Securely the locking button.



- (3) Hook the lower stay of the retractor onto the 2 body hooks and provisionally install the retractor with the 2 bolts.
- (4) Tighten bolt A and then bolt B.  
**Torque: 8.5 N\*m (85 kgf\*cm, 75 in.\*lbf) for bolt A**  
**42 N\*m (430 kgf\*cm, 31 ft.\*lbf) for bolt B**
- (5) Connect the tension reducer connector.



- (d) Install the through anchor with the bolt.  
**Torque: 42 N\*m (430 kgf\*cm, 31 ft.\*lbf)**
- (e) Make sure that the shoulder anchor rotates smoothly.
- (f) Check that the ELR locks.

**NOTICE:**

**Perform the check with the front seat outer belt installed.**

- (1) With the belt installed, check that the belt locks when it is pulled out quickly.  
If the operation is not as specified, replace the front seat outer belt.

3. **INSTALL CENTER PILLAR UPPER GARNISH** (See page [ED-40](#))
4. **INSTALL ACCESS DOOR TRIM BOARD SUB-ASSEMBLY** (See page [ED-41](#))
5. **INSTALL CUP HOLDER** (See page [ED-41](#))
6. **INSTALL ACCESS DOOR INSIDE HANDLE SUB-ASSEMBLY** (See page [ED-41](#))
7. **INSTALL LAP BELT OUTER ANCHOR COVER** (See page [ED-42](#))
8. **INSTALL ACCESS PANEL REAR WEATHERSTRIP** (See page [ED-42](#))
9. **CONNECT CABLE TO NEGATIVE BATTERY TERMINAL**  
**Torque: 3.9 N\*m (40 kgf\*cm, 35 in.\*lbf)**
10. **INSPECT SRS WARNING LIGHT** (See page [RS-29](#))

## DISPOSAL

### CAUTION:

- Never dispose of a front seat outer belt that has an inactivated pretensioner.
- The seat belt pretensioner produces a loud, exploding sound when it activates. Perform the operation where it will not be a nuisance to persons nearby.
- Stand at least 10 m (33 ft) away when activating a front seat outer belt (with the seat belt pretensioner).
- Use gloves and safety glasses when handling a front seat outer belt with an activated pretensioner.
- Always wash your hands with water after completing an activation.
- Do not apply water to a front seat outer belt that has an activated pretensioner.
- Always use the specified SST (SRS airbag deployment tool) when activating the seat belt pretensioner.
- Perform the operation in a place away from electrical interference.

### HINT:

The procedure described below is for the RH side. Use the same procedure for both the RH and LH sides, unless otherwise specified.

### 1. DISPOSE OF FRONT SEAT OUTER BELT ASSEMBLY (When Installed in Vehicle)

#### HINT:

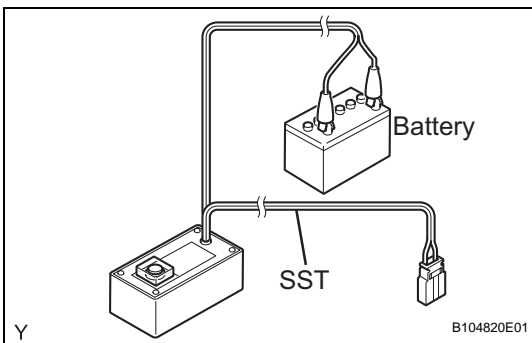
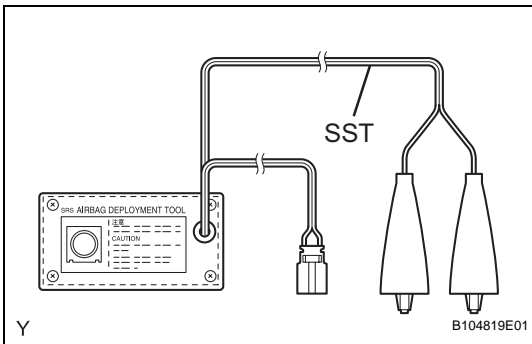
Prepare a battery as the power source to activate the seat belt pretensioner.

- (a) Check whether SST is functioning.

**SST 09082-00700**

#### CAUTION:

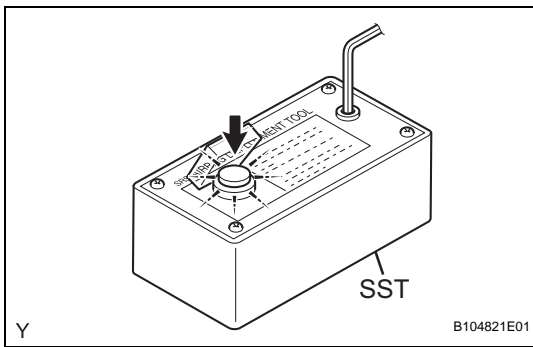
**Always use the specified SST when activating the seat belt pretensioner.**



- (1) Connect the SST red clip to the positive battery terminal and the black clip to the negative battery terminal.

#### HINT:

Do not connect the yellow connector. The yellow connector is for connections to the seat belt pretensioner.

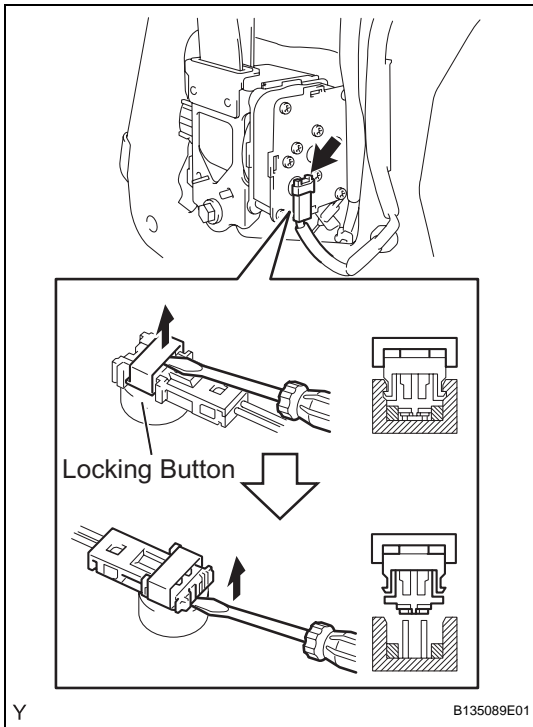


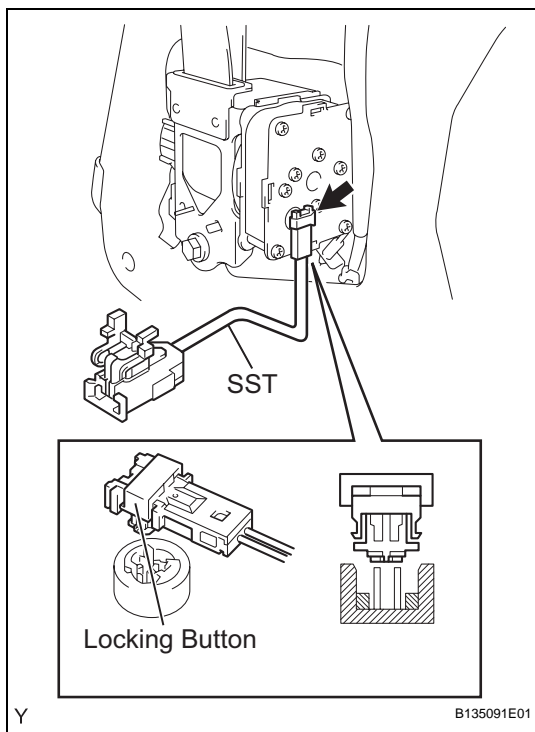
- (2) Press the SST activation switch and check that the LED of the SST activation switch illuminates.

**CAUTION:**

**If the LED illuminates when the activation switch is not being pressed, SST may be malfunctioning. Do not use SST.**

- (b) Disconnect the SST from the battery.
- (c) Disconnect the pretensioner connector.
  - (1) Disconnect the cable from the negative battery terminal.
  - (2) Remove the access panel rear weatherstrip (See page ED-29).
  - (3) Remove the lap belt outer anchor cover (See page ED-29).
  - (4) Remove the access door inside handle sub-assembly (See page ED-29).
  - (5) Remove the cup holder (See page ED-29).
  - (6) Remove the access door trim board sub-assembly (See page ED-30).
  - (7) Disconnect the pretensioner connector.
    1. Using a screwdriver, release the locking button.
    2. Using a screwdriver, disconnect the pretensioner connector.





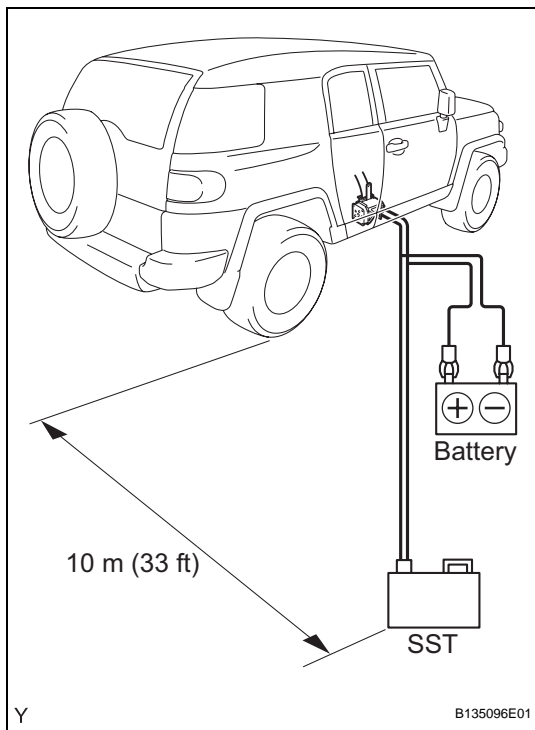
## (d) Connect SST.

- (1) Connect SST, then connect the yellow connector to the seat belt pretensioner.

**SST 09082-00770**

**NOTICE:**

**Do not lock the secondary lock of the twin lock to avoid damaging the SST connector and wire harness.**



- (2) Connect SST.

**SST 09082-00700**

**NOTICE:**

**Do not lock the secondary lock of the twin lock to avoid damaging the SST connector and wire harness.**

- (3) Move SST at least 10 m (33 ft) away from the vehicle.
- (4) Close the doors and windows of the vehicle.

**NOTICE:**

**Do not damage the SST wire harness.**

**HINT:**

Do not close the windows fully. Leave a gap for inserting the SST wire harness.

- (5) Connect the SST red clip to the positive battery terminal and the black clip to the negative battery terminal.

## (e) Activate the seat belt pretensioner.

- (1) Confirm that no one is inside the vehicle or within 10 m (33 ft) of the vehicle.

- (2) Press the SST activation switch and activate the seat belt pretensioner.

**HINT:**

The seat belt pretensioner operates simultaneously with the SST activation switch LED light.

- (f) Disconnect SST.

- (g) Dispose of the front seat outer belt (with the seat belt pretensioner).

**CAUTION:**

- Do not touch the front seat outer belt for at least 30 minutes after the seat belt pretensioner has been activated. It is very hot.
- Use gloves and safety glasses when handling a front seat outer belt with a pretensioner that has been activated.
- Always wash your hands with water after completing the operation.
- Do not apply water to a front seat outer belt that has an activated pretensioner.

**HINT:**

When scrapping a vehicle, activate the seat belt pretensioner, and then scrap the vehicle with the activated front seat outer belt still installed.

## 2. DISPOSE OF FRONT SEAT OUTER BELT ASSEMBLY (When not Installed in Vehicle)

**NOTICE:**

- Never use the customer's vehicle to activate the seat belt pretensioner when only disposing of the front seat outer belt (with the seat belt pretensioner).
- Follow the procedure described below when activating the seat belt pretensioner.

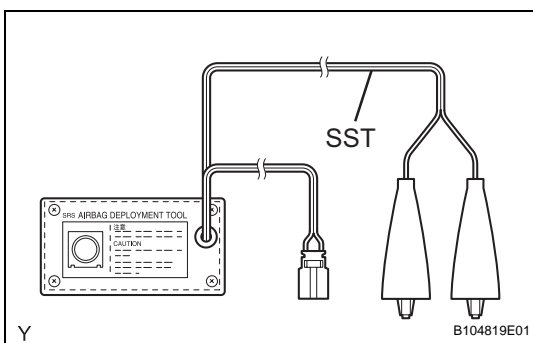
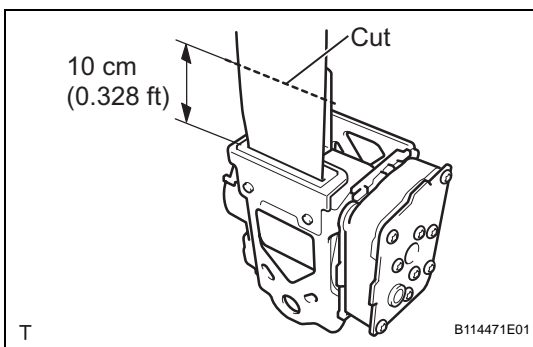
**HINT:**

Prepare a battery as the power source to activate the seat belt pretensioner.

- (a) Remove the front seat outer belt assembly (See page [SB-36](#)).
- (b) Wind the seat belt with the retractor.
- (c) When the seat belt is sufficiently wound, cut the seat belt approximately 10 cm (0.328 ft) from the retractor, as shown in the illustration.

**HINT:**

The retractor resistance increases in correlation with how much the seat belt is wound.



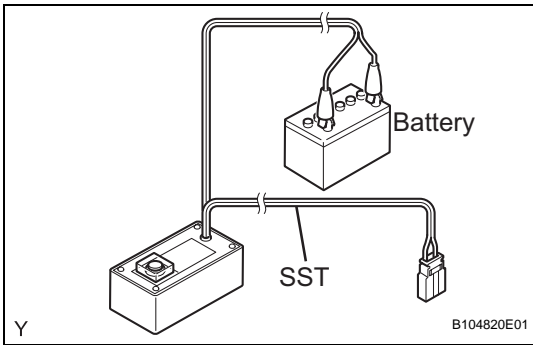
- (d) Check whether SST is functioning.

**SST 09082-00700**

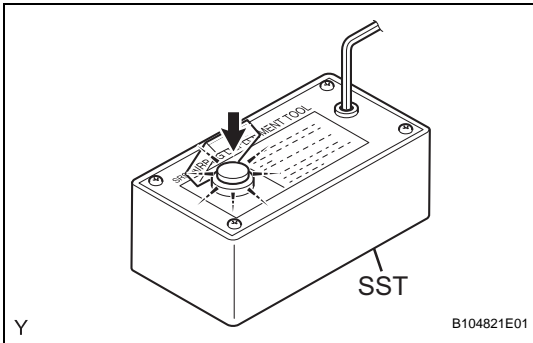
**CAUTION:**

**Always use the specified SST when activating the seat belt pretensioner.**



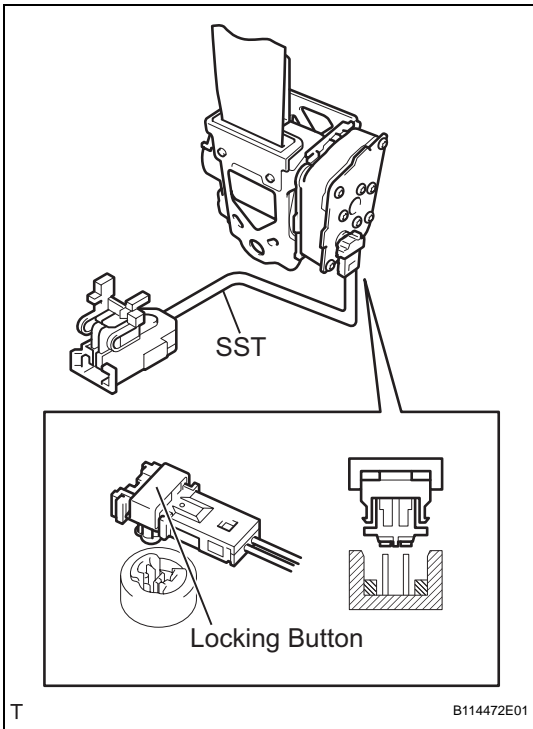


- (1) Connect the SST red clip to the positive battery terminal and the black clip to the negative battery terminal.  
**HINT:**  
 Do not connect the yellow connector. The yellow connector is for connections to the seat belt pretensioner.

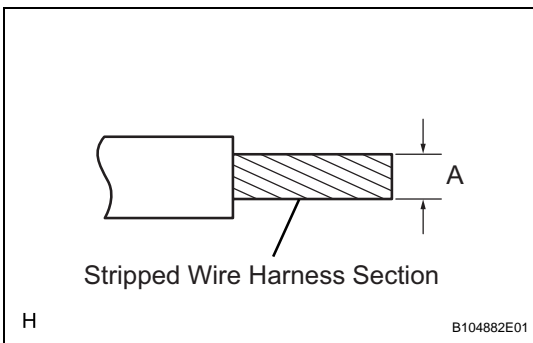


- (2) Press the SST activation switch and check that the LED of the SST activation switch illuminates.  
**CAUTION:**  
 If the LED illuminates when the activation switch is not being pressed, SST may be malfunctioning. Do not use SST.

SB



- (e) Connect SST.
  - (1) Connect SST, then connect the yellow connector to the seat belt pretensioner.  
**SST 09082-00770**  
**NOTICE:**  
 Do not lock the secondary lock of the twin lock to avoid damaging the SST connector and wire harness.



- (2) Using a service-purpose wire harness for the vehicle, tie the seat belt pretensioner to the tire with a wheel attached.

**Stripped wire harness section**

Area	Measurement
A	1.25 mm <sup>2</sup> or more (0.0019 in. <sup>2</sup> or more)

**CAUTION:**

- Do not use wire harnesses that are too thin or any other object to tie the seat belt pretensioner because they may snap due to the shock when the pretensioner is deployed.
- Always use a wire harness for vehicle use, with a cross section of at least 1.25 mm<sup>2</sup> (0.0019 in.<sup>2</sup>).

**HINT:**

To calculate the area of the stripped wire harness cross section:

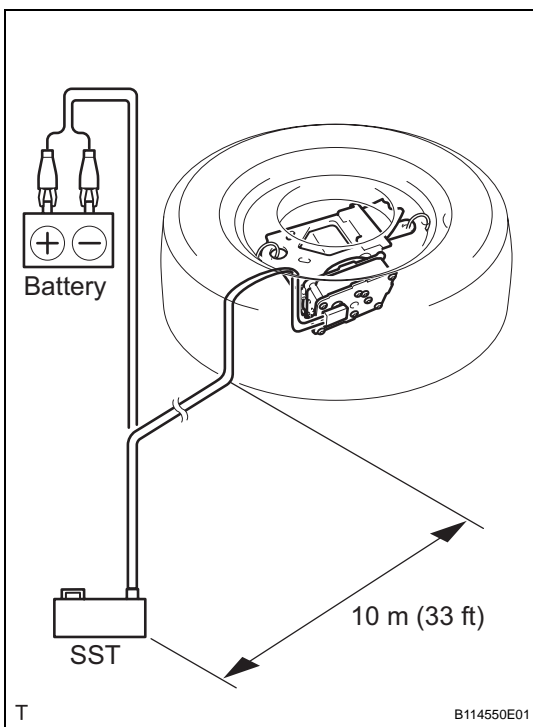
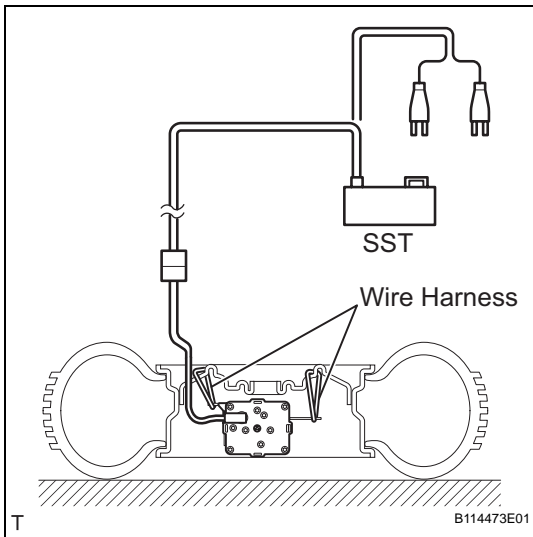
$$\text{Area} = 3.14 \times (\text{Diameter})^2 \text{ divided by } 4$$

- (3) Connect SST.

**SST 09082-00700**

**NOTICE:**

- Do not lock the secondary lock of the twin lock to avoid damaging the SST connector and wire harness.
- Set up the front seat outer belt, as shown in the illustration.



- (4) Move SST at least 10 m (33 ft) away from the wheel.

**NOTICE:**

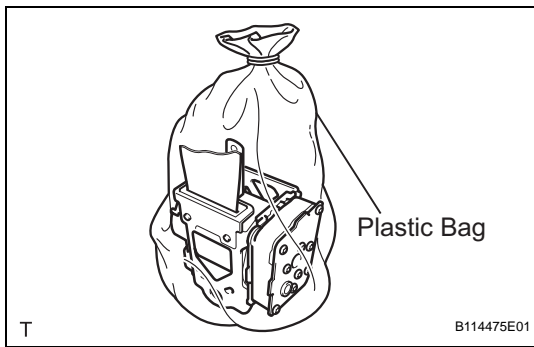
**Do not damage the SST wire harness.**

- (f) Activate the seat belt pretensioner.
- (1) Connect the SST red clip to the positive battery terminal and the black clip to the negative battery terminal.
  - (2) Check that no one is within 10 m (30 ft) of the wheel.
  - (3) Press the SST activation switch and activate the seat belt pretensioner.

**HINT:**

The seat belt pretensioner operates simultaneously with the SST activation switch LED light.

- (g) Disconnect SST.



- (h) Dispose of the front seat outer belt (with the seat belt pretensioner).

**CAUTION:**

- **Do not touch the front seat outer belt for at least 30 minutes after the seat belt pretensioner has been activated. It is very hot.**
  - **Use gloves and safety glasses when handling a front seat outer belt with a pretensioner that has been activated.**
  - **Always wash your hands with water after completing the operation.**
  - **Do not apply water to a front seat outer belt that has an activated pretensioner.**
- (1) Place the front seat outer belt in a plastic bag, tie the end tightly and dispose of it in the same way as other general parts.